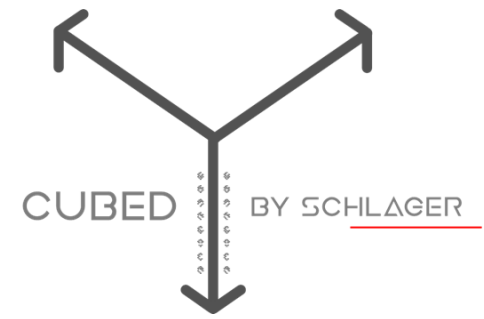


# Cubed By Schlager

Pod Home

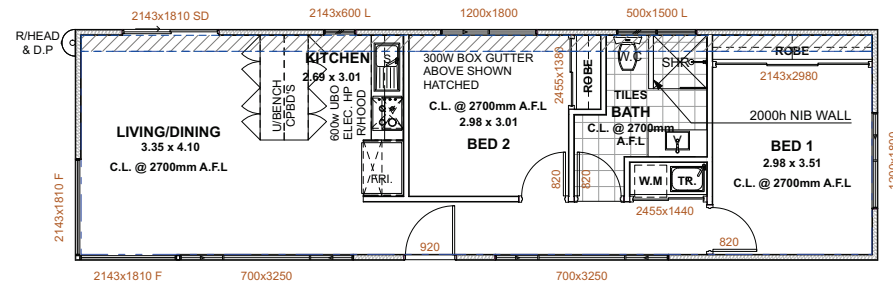
Type A

Prices From:  
\$ 136,939.42



# Pod Home

## Type A



The diagram illustrates a simple neural network architecture. It consists of three layers of nodes: an input layer on the left, a hidden layer in the middle, and an output layer on the right. The input layer has one large green node. The hidden layer has two green nodes, each with a right-pointing arrow on its left and a left-pointing arrow on its right. The output layer has one green node with a right-pointing arrow on its left and a left-pointing arrow on its right. A central vertical rectangle with a dashed diagonal line represents the connection between the input and hidden layers. The entire network is set against a background of horizontal lines.

A diagram of a window with a black border, divided into two equal light green rectangular panes. A black arrow points from the right pane towards the left pane.

**RIGHT ELEVATION**  
**Scale 1:100**